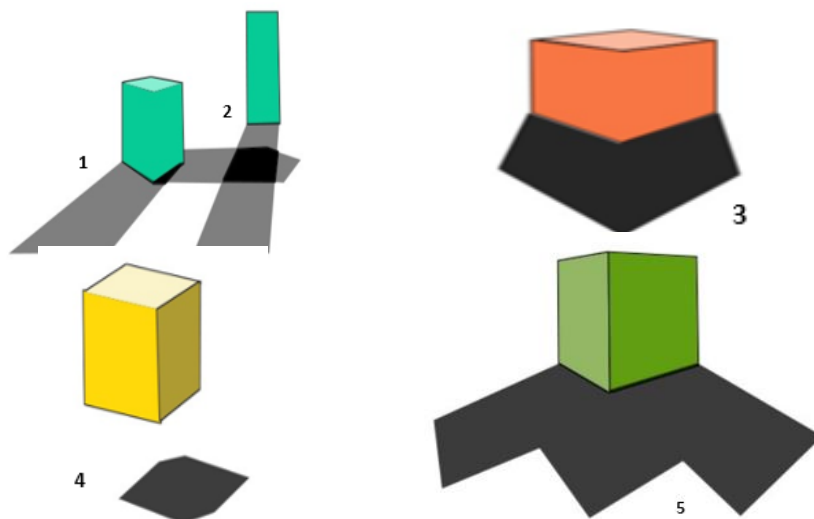


VISUAL REASONING	LOGICAL DERIVATION	NUMERICAL ABILITY
	GENERAL KNOWLEDGE, ARCHITECTURE & DESIGN	
DESIGN THINKING	LANGUAGE INTERPRETATION	DESIGN SENSITIVITY

Match the following statements with the right image options.

- Shadow cast by planar surface.
- Object is lit by more than one light source
- Source light is directly to top of the object.
- Object is not resting on the ground plane.



Source: CAAD- DRL

A.	a - 1	c - 3	C.	a - 2	c - 3,4
	b - 2	d - 4		b - 1,5	d - 4
B.	a - 4	c - 2	D.	a - 2	c - 3,4
	b - 3	d - 1		b - 4	d - 1

Answer key:

C.

C.	a - 2	c - 3,4
	b - 1,5	d - 4

Theory:

Shadows are the relatively dark figures cast upon a surface by an opaque body or part of a body intercepting the rays from a light source.

The shape of the shadow is dependent on

- The position of shade line & the observer, The direction of the light and The form of the surfaces on which the plane of the shadow falls
- When the object is not in contact with the ground, the shadow will be seen detached from the object

Suggested Reading: Basics of light and shadow

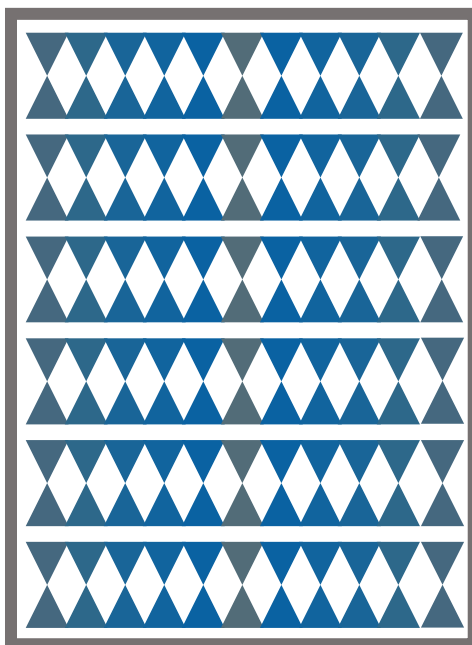
" For a swift review of the subject, kindly consult the study materials available on the website"

This document is a intellectual property of CAAD – Chennai Academy of Architecture and Design. This daily lessons are compiled by expert team of academicians as preparation guidebook for B.Arch., Aptitude examination to aspirants for studying architecture and practicing the same as profession in the future. The material shall not be retained and disseminated to others for commercial purpose. Image copyrights as relevant

NATA 2024 – CAAD BITESIZE

VISUAL REASONING	LOGICAL DERIVATION	NUMERICAL ABILITY
GENERAL KNOWLEDGE, ARCHITECTURE & DESIGN		
DESIGN THINKING	LANGUAGE INTERPRETATION	DESIGN SENSITIVITY

What type of colours are used to design the floor mat given below?



Source: CAAD-DRL

A. Complimentary Colours

B. Tones of Blue

C. Warm Colours

D. Triadic colours

Answer key:

Theory: **Tone** – adding grey to pure colour



Tones



B. Tones of Blue

Suggested Reading: colour theory

" For a swift review of the subject, kindly consult the study materials available on the website"

This document is a intellectual property of CAAD – Chennai Academy of Architecture and Design. This daily lessons are compiled by expert team of academicians as preparation guidebook for B.Arch., Aptitude examination to aspirants for studying architecture and practicing the same as profession in the future. The material shall not be retained and disseminated to others for commercial purpose. Image copyrights as relevant

B.Arch.,

For Admissions Contact
WWW.CAAD.AC.IN

9710 55 4545
9710 93 0025

caad

CHENNAI
ACADEMY OF
ARCHITECTURE AND
DESIGN

VISUAL REASONING	LOGICAL DERIVATION	NUMERICAL ABILITY
GENERAL KNOWLEDGE, ARCHITECTURE & DESIGN		
DESIGN THINKING	LANGUAGE INTERPRETATION	DESIGN SENSITIVITY

A train travels 82.6 kmph. How many meters will it travels in 15 mins?

A. 22650 m

B. 20650 m

C. 25000 m

D. 22000 m

Answer key:

B. 20650 m

Theory:

Distance travelled in 1 min = $(82.6) / 60$ km.

Distance travelled in 15 min = $(82.6) / 60 \times 15$

= 20.65 km

= (20.65×1000) m

= 20650 m.

Suggested Reading: Time and Distance

" For a swift review of the subject, kindly consult the study materials available on the website"

This document is a intellectual property of CAAD – Chennai Academy of Architecture and Design. This daily lessons are compiled by expert team of academicians as preparation guidebook for B.Arch., Aptitude examination to aspirants for studying architecture and practicing the same as profession in the future. The material shall not be retained and disseminated to others for commercial purpose. Image copyrights as relevant

VISUAL REASONING	LOGICAL DERIVATION	NUMERICAL ABILITY
	GENERAL KNOWLEDGE, ARCHITECTURE & DESIGN	
DESIGN THINKING	LANGUAGE INTERPRETATION	DESIGN SENSITIVITY

Pipe A can fill a tank in 30 hrs and pipe B in 45 hrs. If both the pipes are opened in an empty tank, how much time will they take to fill it?

A. 17 hours

B. 20 hours

C. 16 hours

D. 18 hours

Answer key:

D. 18 hours

Theory:

Part filled by A in 1 hour = $1/30$

Part filled by B in 1 hour = $1/45$

Part filled by (A + B) in 1 hour = $1/30 + 1/45$

= $10/180$

= $1/18$

Hence, pipes A and B together will fill the tank in 18 hours.

Suggested Reading: Speed

" For a swift review of the subject, kindly consult the study materials available on the website"

This document is a intellectual property of CAAD – Chennai Academy of Architecture and Design. This daily lessons are compiled by expert team of academicians as preparation guidebook for B.Arch., Aptitude examination to aspirants for studying architecture and practicing the same as profession in the future. The material shall not be retained and disseminated to others for commercial purpose. Image copyrights as relevant

VISUAL REASONING	LOGICAL DERIVATION	NUMERICAL ABILITY
GENERAL KNOWLEDGE, ARCHITECTURE & DESIGN		
DESIGN THINKING	LANGUAGE INTERPRETATION	DESIGN SENSITIVITY

This soaring skyscraper in Dubai, currently the tallest building in the world, utilizes advanced engineering and features a slender form with a triangular cross-section, offering breathtaking panoramic views.



Source: Burj Khalifa - Burj Khalifa - Wikipedia

A. Petronas Towers

C. Taipei 101

B. Burj Khalifa

D. Shanghai Tower

Answer key:

Theory:

Explanation: The details of being the tallest, triangular cross-section, and panoramic views distinctly identify the Burj Khalifa, a global symbol of modern engineering and architectural ambition.

C) Burj Khalifa

Suggested Reading: History of Architecture

" For a swift review of the subject, kindly consult the study materials available on the website"

This document is a intellectual property of CAAD – Chennai Academy of Architecture and Design. This daily lessons are compiled by expert team of academicians as preparation guidebook for B.Arch., Aptitude examination to aspirants for studying architecture and practicing the same as profession in the future. The material shall not be retained and disseminated to others for commercial purpose. Image copyrights as relevant

VISUAL REASONING	LOGICAL DERIVATION	NUMERICAL ABILITY
GENERAL KNOWLEDGE, ARCHITECTURE & DESIGN		
DESIGN THINKING	LANGUAGE INTERPRETATION	DESIGN SENSITIVITY

Identify the materials which can be used for pitched roof coverings?



1. Clay



2. Aluminium



3. Slate



4. Glass

A. Options – 1, 3

B. Options – 2, 4

C. Options - 1,2,3

D. Options – 1,2,3,4

Answer key:

D. Options – 1,2,3,4

Theory:

Roof, covering of the top of a building, serving to protect against rain, snow, sunlight, wind, and extremes of temperature. Roofs can be constructed with wide variety of materials such as clay and concrete tiles, metal roofing, slate, glass, Asphalt shingles etc.

Suggested Reading: Basics of building construction/Components

" For a swift review of the subject, kindly consult the study materials available on the website"

This document is a intellectual property of CAAD – Chennai Academy of Architecture and Design. This daily lessons are compiled by expert team of academicians as preparation guidebook for B.Arch., Aptitude examination to aspirants for studying architecture and practicing the same as profession in the future. The material shall not be retained and disseminated to others for commercial purpose. Image copyrights as relevant

VISUAL REASONING	LOGICAL DERIVATION	NUMERICAL ABILITY
	GENERAL KNOWLEDGE, ARCHITECTURE & DESIGN	
DESIGN THINKING	LANGUAGE INTERPRETATION	DESIGN SENSITIVITY

..... is the way to narrow down the thoughts to reach at the final solution

A. Convergent thinking

B. Divergent thinking

C. None of them

D. Both of them

Answer key:

A. Convergent thinking

Theory:

Convergent thinking is the process of narrowing down various ideas and options to identify the best or most suitable solution to a problem. It involves evaluating and selecting from multiple possibilities to converge towards a single, focused solution.

Suggested Reading: Design Thinking

"For a swift review of the subject, kindly consult the study materials available on the website"

This document is a intellectual property of CAAD – Chennai Academy of Architecture and Design. This daily lessons are compiled by expert team of academicians as preparation guidebook for B.Arch., Aptitude examination to aspirants for studying architecture and practicing the same as profession in the future. The material shall not be retained and disseminated to others for commercial purpose. Image copyrights as relevant

VISUAL REASONING	LOGICAL DERIVATION	NUMERICAL ABILITY
	GENERAL KNOWLEDGE, ARCHITECTURE & DESIGN	
DESIGN THINKING	LANGUAGE INTERPRETATION	DESIGN SENSITIVITY

In the question given below, a part of the sentence is *italicised and underlined*. Below are given alternatives to the italicised part which may improve the sentence. Choose the correct alternative.

The solution that he worked out was *not only correct but complicated*.

A. was not only correct but also complicated.

C. was correct only but complicated.

B. was correct but complicated.

D. No correction required

Answer key:

B. was correct but complicated.

Theory:

Option B

Explanation:

Correct" is a positive description of the solution, while "complicated" is not. So a parallel sentence construction (in this case, 'not only...but') is inappropriate.

Option C uses 'only' inappropriately.

Option B is the correct choice.

The question is " Choose the grammatically correct option "

Hence, the answer is option B

Choice B is the correct answer.

Suggested Reading: Phrase Replacement

" For a swift review of the subject, kindly consult the study materials available on the website"

This document is a intellectual property of CAAD – Chennai Academy of Architecture and Design. This daily lessons are compiled by expert team of academicians as preparation guidebook for B.Arch., Aptitude examination to aspirants for studying architecture and practicing the same as profession in the future. The material shall not be retained and disseminated to others for commercial purpose. Image copyrights as relevant

VISUAL REASONING	LOGICAL DERIVATION	NUMERICAL ABILITY
	GENERAL KNOWLEDGE, ARCHITECTURE & DESIGN	
DESIGN THINKING	LANGUAGE INTERPRETATION	DESIGN SENSITIVITY

Two statements are given followed by two conclusions. Choose the conclusion(s) which best fit(s) logically. Disregard common known facts.

Statements:

- A. All cars are cats.
- B. All fans are cats.

Conclusions:

- I. All cars are fans.
- II. Some fans are cars.

A. Only Conclusion I follows.

C. Either I or II follows

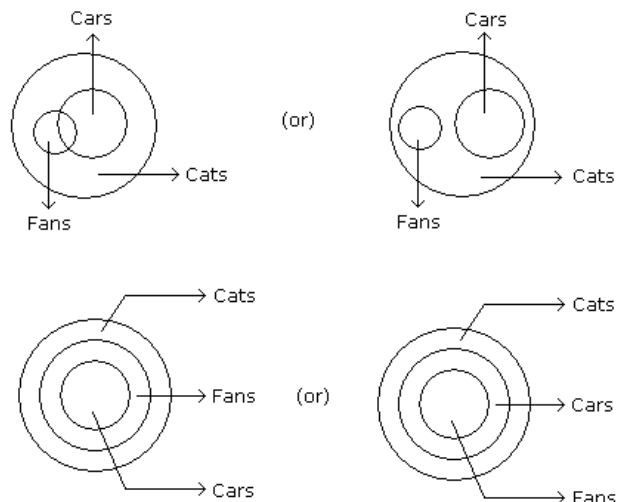
B. Only Conclusion II follows

D. Neither I nor II follows

Answer key:

Theory:

D: The illustration shows that neither I or II follows.



None of these two follows.

D. Neither I nor II follows

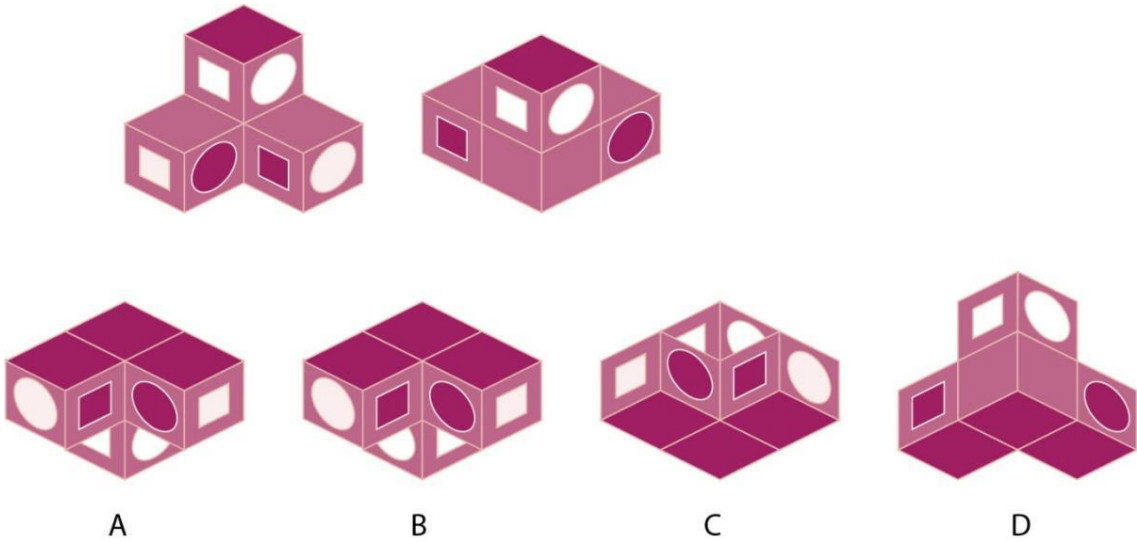
Suggested Reading: Syllogism

"For a swift review of the subject, kindly consult the study materials available on the website"

This document is a intellectual property of CAAD – Chennai Academy of Architecture and Design. This daily lessons are compiled by expert team of academicians as preparation guidebook for B.Arch., Aptitude examination to aspirants for studying architecture and practicing the same as profession in the future. The material shall not be retained and disseminated to others for commercial purpose. Image copyrights as relevant

VISUAL REASONING	LOGICAL DERIVATION	NUMERICAL ABILITY
	GENERAL KNOWLEDGE, ARCHITECTURE & DESIGN	
DESIGN THINKING	LANGUAGE INTERPRETATION	DESIGN SENSITIVITY

A painted solid is shown from two different directions. Which of the options can be the same solid seen from another direction?



A. A, B and D	C. B, C and D
B. A and D	D. C and D
Answer key: C. B, C and D	Theory: C. B, C and D The view A is not correct as the white square in the partially hidden cube should be on the right and the white circle should be on the left.

Suggested Reading: 2D and 3D Views of objects
" For a swift review of the subject, kindly consult the study materials available on the website"

This document is a intellectual property of CAAD – Chennai Academy of Architecture and Design. This daily lessons are compiled by expert team of academicians as preparation guidebook for B.Arch., Aptitude examination to aspirants for studying architecture and practicing the same as profession in the future. The material shall not be retained and disseminated to others for commercial purpose. Image copyrights as relevant