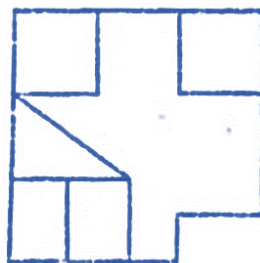
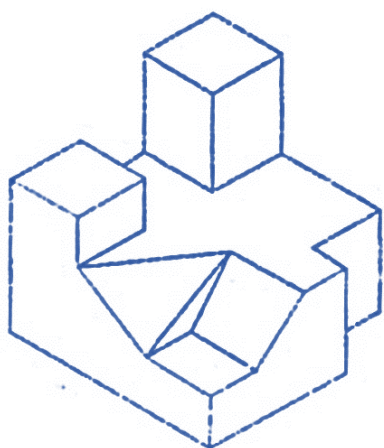
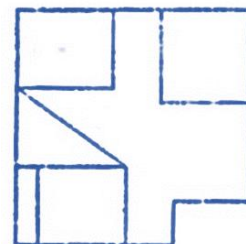


VISUAL REASONING	LOGICAL DERIVATION	NUMERICAL ABILITY
	GENERAL KNOWLEDGE, ARCHITECTURE & DESIGN	
DESIGN THINKING	LANGUAGE INTERPRETATION	DESIGN SENSITIVITY

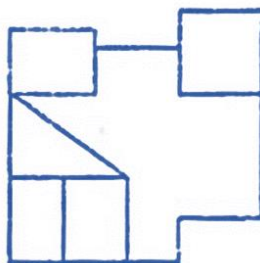
The figure shows the top view of an object. Identify the correct elevation looking in the direction of the arrow.



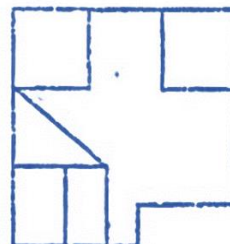
A



B



C



D

A. Option A

B. Option B

C. Option C

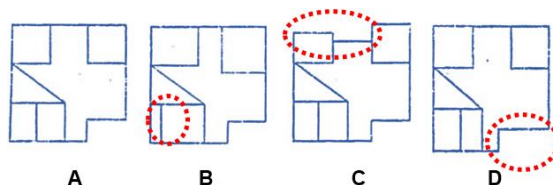
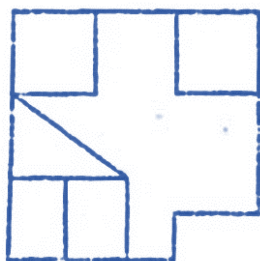
D. Option D

Answer key:

Theory:

The lines inside the red circles are the lines which are not correct in the top view. So Option A is correct

A.



A

B

C

D

Suggested Reading: Basics of Orthographic projections

" For a swift review of the subject, kindly consult the study materials available on the website"

This document is a intellectual property of CAAD – Chennai Academy of Architecture and Design. This daily lessons are compiled by expert team of academicians as preparation guidebook for B.Arch., Aptitude examination to aspirants for studying architecture and practicing the same as profession in the future. The material shall not be retained and disseminated to others for commercial purpose. Image copyrights as relevant

VISUAL REASONING	LOGICAL DERIVATION	NUMERICAL ABILITY
	GENERAL KNOWLEDGE, ARCHITECTURE & DESIGN	
DESIGN THINKING	LANGUAGE INTERPRETATION	DESIGN SENSITIVITY

Identify the element of design which is seen evidently Qutub complex, New Delhi. This element of design connects two points. Its length dominates the width and has a directional quality.



A. Point

B. Line

C. Shape

D. Space

Answer key:

Theory:

B. Line

LINE

Point that is extended along a direction. Line has length and describes a point in motion. Expresses direction, movement and growth. Line also defines the edges of planes and give them the shape. A Line can articulate the surfaces of planes. A line is a form with width and length, but no depth.

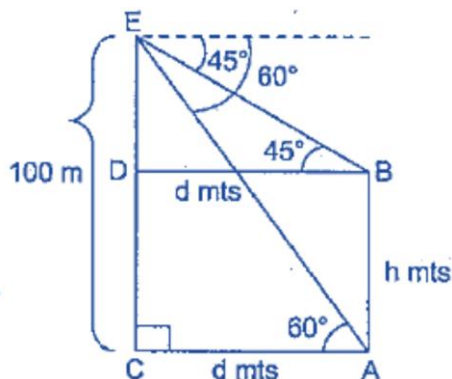
Suggested Reading: Principles of design

" For a swift review of the subject, kindly consult the study materials available on the website"

This document is a intellectual property of CAAD – Chennai Academy of Architecture and Design. This daily lessons are compiled by expert team of academicians as preparation guidebook for B.Arch., Aptitude examination to aspirants for studying architecture and practicing the same as profession in the future. The material shall not be retained and disseminated to others for commercial purpose. Image copyrights as relevant

VISUAL REASONING	LOGICAL DERIVATION	NUMERICAL ABILITY
GENERAL KNOWLEDGE, ARCHITECTURE & DESIGN		
DESIGN THINKING	LANGUAGE INTERPRETATION	DESIGN SENSITIVITY

From the top of a building 100m high the angles of depression of the bottom and the top of another building just opposite to it are observed to be 60° and 45° respectively. Find the height of the building.



A. 42.27 m

B. 45.72 m

C. 52.27 m

D. 50.27 m

Answer key:

A. 42.27 m

Theory:

Let the height of the building be h metres.

Let $AC = BD = d$ metres.

From $\triangle BDE$, $\tan 45^\circ = ED/BD$

$$1 = (100 - h) / d$$

$$d = 100 - h \dots\dots(1)$$

From $\triangle ACE$, $\tan 60^\circ = CE/AC$

$$\sqrt{3} = 100 / d$$

$$\sqrt{3} d = 100$$

$$\sqrt{3} (100 - h) = 100$$

$$h = 100 (3 - \sqrt{3}) / 3 \text{ m} = 42.27 \text{ m}$$

Suggested Reading: Trigonometry

" For a swift review of the subject, kindly consult the study materials available on the website"

This document is a intellectual property of CAAD – Chennai Academy of Architecture and Design. This daily lessons are compiled by expert team of academicians as preparation guidebook for B.Arch., Aptitude examination to aspirants for studying architecture and practicing the same as profession in the future. The material shall not be retained and disseminated to others for commercial purpose. Image copyrights as relevant

VISUAL REASONING	LOGICAL DERIVATION	NUMERICAL ABILITY
GENERAL KNOWLEDGE, ARCHITECTURE & DESIGN		
DESIGN THINKING	LANGUAGE INTERPRETATION	DESIGN SENSITIVITY

A 100 m long train is running at the speed of 30 kmph. Find the time taken by it to pass a man standing near the railway line.

A. 6 sec

B. 24 sec

C. 12 sec

D. 18 sec

Answer key:

Theory:

C. 12 sec

$$\begin{aligned} \text{Speed of the train} &= (30 \times \frac{1000}{3600}) \text{ m / sec} \\ &= \frac{25}{3} \text{ m/sec.} \end{aligned}$$

Distance moved in passing the standing man = 100 m.

$$\begin{aligned} \text{Required time taken} &= \frac{100}{\frac{25}{3}} \\ &= (100 \times \frac{3}{25}) \text{ sec} \\ &= 12 \text{ sec.} \end{aligned}$$

Suggested Reading: Speed

" For a swift review of the subject, kindly consult the study materials available on the website"

This document is a intellectual property of CAAD – Chennai Academy of Architecture and Design. This daily lessons are compiled by expert team of academicians as preparation guidebook for B.Arch., Aptitude examination to aspirants for studying architecture and practicing the same as profession in the future. The material shall not be retained and disseminated to others for commercial purpose. Image copyrights as relevant

VISUAL REASONING	LOGICAL DERIVATION	NUMERICAL ABILITY
GENERAL KNOWLEDGE, ARCHITECTURE & DESIGN		
DESIGN THINKING	LANGUAGE INTERPRETATION	DESIGN SENSITIVITY

_____ roofs are preferred in areas having heavy rainfall.

A. Pitched roof

B. Flat roof

C. Terraced roof

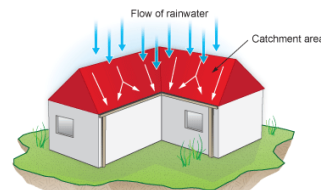
D. Madras terrace roof

Answer key:

Theory:

Pitched roofs have a sloping top surface which allows the rain or snow to slide off. Since the rain water drains away quickly from the sloping roof helps in increasing their life span. A steep-slope roof creates attic space which can be used as a storage space.

A. Pitched roof



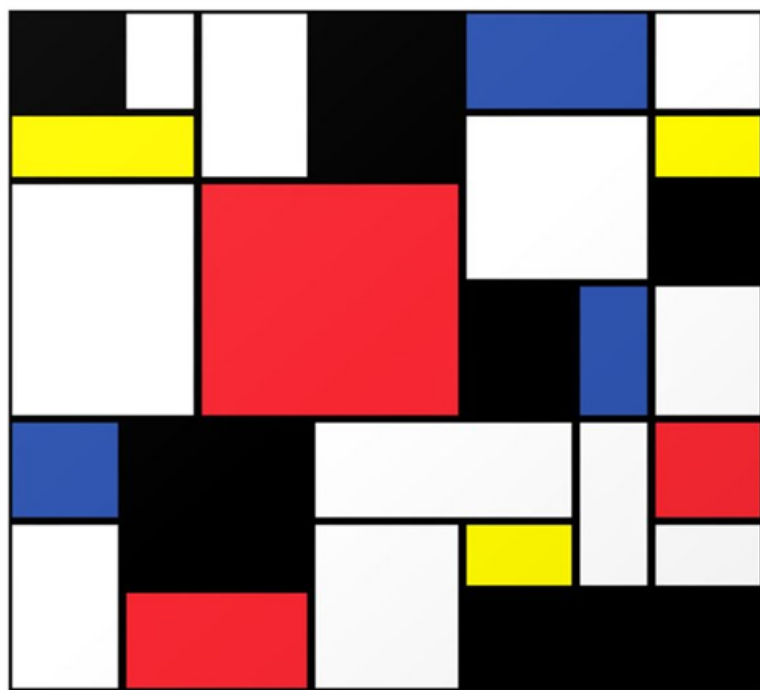
Suggested Reading: Basics of building construction/Components

" For a swift review of the subject, kindly consult the study materials available on the website"

This document is a intellectual property of CAAD – Chennai Academy of Architecture and Design. This daily lessons are compiled by expert team of academicians as preparation guidebook for B.Arch., Aptitude examination to aspirants for studying architecture and practicing the same as profession in the future. The material shall not be retained and disseminated to others for commercial purpose. Image copyrights as relevant

VISUAL REASONING	LOGICAL DERIVATION	NUMERICAL ABILITY
	GENERAL KNOWLEDGE, ARCHITECTURE & DESIGN	
DESIGN THINKING	LANGUAGE INTERPRETATION	DESIGN SENSITIVITY

Name the art movement behind this Painting?



Source: <https://www.theartstory.org/movement/de-stijl/>

A. Art Deco

B. De Stijl

C. Expressionism

D. Dadaism

Answer key:

Theory:

Headed by Dutch artists Piet Mondrian and Theo van Doesburg, De Stijl rejected pre-war decorative tendencies (think Art Nouveau) and pushed Cubism to new extremes: total abstraction consisting of only the most basic design components — vertical and horizontal lines, primary colors

B. De Stijl

Suggested Reading: Art Movement

"For a swift review of the subject, kindly consult the study materials available on the website"

This document is a intellectual property of CAAD – Chennai Academy of Architecture and Design. This daily lessons are compiled by expert team of academicians as preparation guidebook for B.Arch., Aptitude examination to aspirants for studying architecture and practicing the same as profession in the future. The material shall not be retained and disseminated to others for commercial purpose. Image copyrights as relevant

VISUAL REASONING	LOGICAL DERIVATION	NUMERICAL ABILITY
	GENERAL KNOWLEDGE, ARCHITECTURE & DESIGN	
DESIGN THINKING	LANGUAGE INTERPRETATION	DESIGN SENSITIVITY

How does design history and theory inform architectural practice?

- A. By disregarding historical precedents and theoretical frameworks
- B. By providing insights into architectural traditions, movements, and philosophies .
- C. By limiting design possibilities .
- D. By excluding interdisciplinary exchange and collaboration

Answer key:

- B. By providing insights into architectural traditions, movements, and philosophies .

Theory:

Design history and theory provide architects with insights into past architectural traditions, movements, and theoretical frameworks, helping them understand the evolution of design ideas, principles, and practices and informing their design approach and decision-making process.

Suggested Reading: Design Thinking

" For a swift review of the subject, kindly consult the study materials available on the website"

This document is a intellectual property of CAAD – Chennai Academy of Architecture and Design. This daily lessons are compiled by expert team of academicians as preparation guidebook for B.Arch., Aptitude examination to aspirants for studying architecture and practicing the same as profession in the future. The material shall not be retained and disseminated to others for commercial purpose. Image copyrights as relevant

VISUAL REASONING	LOGICAL DERIVATION	NUMERICAL ABILITY
	GENERAL KNOWLEDGE, ARCHITECTURE & DESIGN	
DESIGN THINKING	LANGUAGE INTERPRETATION	DESIGN SENSITIVITY

Find the synonym of the underlined word.

Please say something that will edify the audience.

A. Perplex	C. Annoy
B. Instruct	D. Amuse
Answer key: B. Instruct	Theory: <i>B Instruct : To edify is to instruct another person, especially in a moral or encouraging sense.</i>

Suggested Reading: Meanings and Synonyms
" For a swift review of the subject, kindly consult the study materials available on the website"

This document is a intellectual property of CAAD – Chennai Academy of Architecture and Design. This daily lessons are compiled by expert team of academicians as preparation guidebook for B.Arch., Aptitude examination to aspirants for studying architecture and practicing the same as profession in the future. The material shall not be retained and disseminated to others for commercial purpose. Image copyrights as relevant

VISUAL REASONING	LOGICAL DERIVATION	NUMERICAL ABILITY
	GENERAL KNOWLEDGE, ARCHITECTURE & DESIGN	
DESIGN THINKING	LANGUAGE INTERPRETATION	DESIGN SENSITIVITY

Select the lettered pair that has the same relationship as the original pair of words.

Scale : Weight

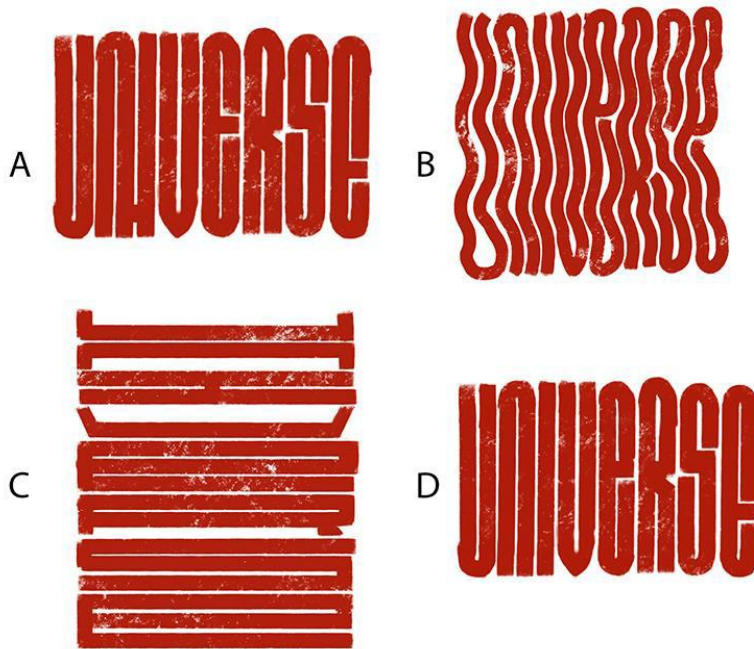
A. Yardstick : Length	C. Length : Width
B. Width : Depth	D. Size : Area
Answer key: A. Yardstick : Length	Theory: Option A. A scale measures weight; a yardstick measures length..

Suggested Reading: Analogy
" For a swift review of the subject, kindly consult the study materials available on the website"

This document is a intellectual property of CAAD – Chennai Academy of Architecture and Design. This daily lessons are compiled by expert team of academicians as preparation guidebook for B.Arch., Aptitude examination to aspirants for studying architecture and practicing the same as profession in the future. The material shall not be retained and disseminated to others for commercial purpose. Image copyrights as relevant

VISUAL REASONING	LOGICAL DERIVATION	NUMERICAL ABILITY
	GENERAL KNOWLEDGE, ARCHITECTURE & DESIGN	
DESIGN THINKING	LANGUAGE INTERPRETATION	DESIGN SENSITIVITY

The options show four ways of attempting to write the word “universe” in a mix of lower-case and upper-case letters. Which of the option(s) is/are correctly read as “universe”?



A. A, D

C. A, C

B. A, B, D

D. B, C, D

Answer key:

Theory:

Option B, C and D

The word universe can be seen in B and D when you read from left to right. C has to be read from top to down and the letters are flattened in this case. .

D. B, C, D

Suggested Reading: Lateral Thinking

" For a swift review of the subject, kindly consult the study materials available on the website"

This document is a intellectual property of CAAD – Chennai Academy of Architecture and Design. This daily lessons are compiled by expert team of academicians as preparation guidebook for B.Arch., Aptitude examination to aspirants for studying architecture and practicing the same as profession in the future. The material shall not be retained and disseminated to others for commercial purpose. Image copyrights as relevant