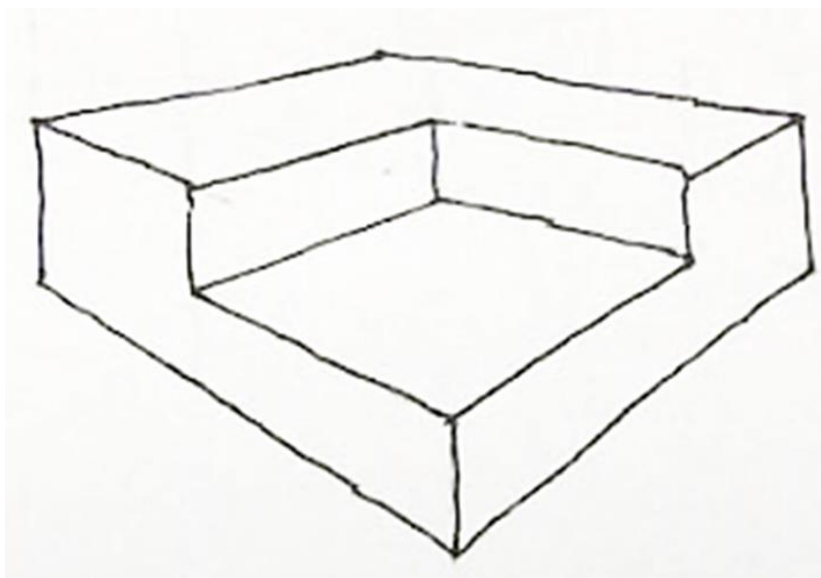


VISUAL REASONING	LOGICAL DERIVATION	NUMERICAL ABILITY
	GENERAL KNOWLEDGE, ARCHITECTURE & DESIGN	
DESIGN THINKING	LANGUAGE INTERPRETATION	DESIGN SENSITIVITY

From the given view identify the height of the eyelevel of person viewing the object.



Source: CAAD- DRL

A. Eye level is below the height of the object

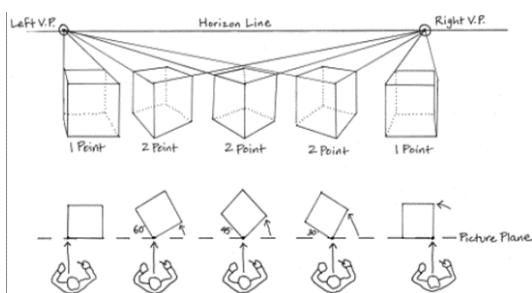
C. Eye level and the height of the object are at the same height

B. Eye level is above the height of the object

D. None of the above

Answer key:

B.



Theory:

Two point perspective:

Two point perspective (angular perspective) has two vanishing points on the horizon line, which don't necessarily need to be within the picture plane. If the eyelevel is above the horizon line, the viewer can see the top/roof of the object/building

Suggested Reading: Basics of One point Perspective

" For a swift review of the subject, kindly consult the study materials available on the website"

This document is a intellectual property of CAAD – Chennai Academy of Architecture and Design. This daily lessons are compiled by expert team of academicians as preparation guidebook for B.Arch., Aptitude examination to aspirants for studying architecture and practicing the same as profession in the future.

The material shall not be retained and disseminated to others for commercial purpose. Image copyrights as relevant

VISUAL REASONING	LOGICAL DERIVATION	NUMERICAL ABILITY
	GENERAL KNOWLEDGE, ARCHITECTURE & DESIGN	
DESIGN THINKING	LANGUAGE INTERPRETATION	DESIGN SENSITIVITY

Which image pertains to the principle of Figure Ground?

A.



Image sourced: saraha1617.wordpress.com

C.



Image source: eyecanlearn.com

B.



Image source: 2.bp.blogspot.com

D.

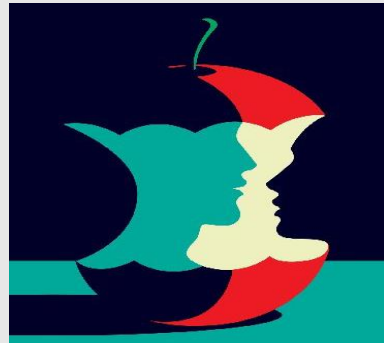


Image source: newyorker.com

Answer key:

Theory:

Figure Ground relationship

"Elements are perceived as either figure (the element in focus)/ground (the background on which the figure rests)." Figure/ ground refers to the relationship between positive elements & negative space.



D.



Suggested Reading: visual composition

" For a swift review of the subject, kindly consult the study materials available on the website"

This document is a intellectual property of CAAD – Chennai Academy of Architecture and Design. This daily lessons are compiled by expert team of academicians as preparation guidebook for B.Arch., Aptitude examination to aspirants for studying architecture and practicing the same as profession in the future. The material shall not be retained and disseminated to others for commercial purpose. Image copyrights as relevant

VISUAL REASONING	LOGICAL DERIVATION	NUMERICAL ABILITY
	GENERAL KNOWLEDGE, ARCHITECTURE & DESIGN	
DESIGN THINKING	LANGUAGE INTERPRETATION	DESIGN SENSITIVITY

Ashok wants to design a roof-light for his room, which has the shape of a dodecahedron. Can you help him in selecting the right shape of the pane of glass for the roof-light from the options given below?

A. Triangular shape

B. Hexagonal shape

C. Square shape

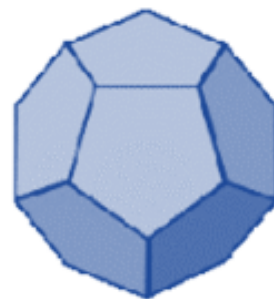
D. Pentagon shape

Answer key:

Theory:

DODECAHEDRON is a platonic solid with 12 pentagon faces

D. Pentagon Shape



Suggested Reading: Platonic Solids and their nets

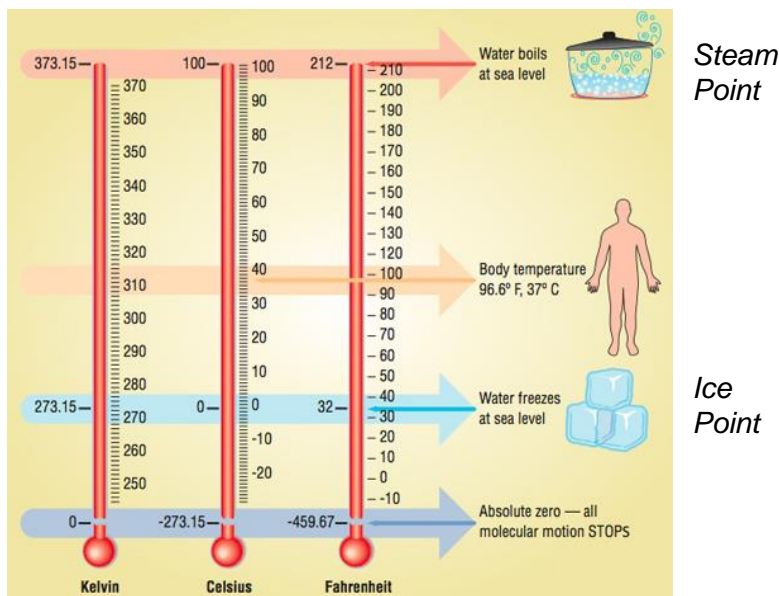
" For a swift review of the subject, kindly consult the study materials available on the website"

This document is a intellectual property of CAAD – Chennai Academy of Architecture and Design. This daily lessons are compiled by expert team of academicians as preparation guidebook for B.Arch., Aptitude examination to aspirants for studying architecture and practicing the same as profession in the future.

The material shall not be retained and disseminated to others for commercial purpose. Image copyrights as relevant

VISUAL REASONING	LOGICAL DERIVATION	NUMERICAL ABILITY
GENERAL KNOWLEDGE, ARCHITECTURE & DESIGN		
DESIGN THINKING	LANGUAGE INTERPRETATION	DESIGN SENSITIVITY

Thermometer A and B have ice points marked at 15° and 25° and steam points at 75° and 125° respectively. When thermometer A measures the temperature of a bath as 60° the reading of B for the same bath is



A. 60°

B. 75°

C. 100°

D. 90°

Answer key:

C. 100°

Theory:

For any two thermometer,

$$\frac{\text{Reading} - \text{Ice Point}}{\text{Steam Point} - \text{Ice Point}} = \text{Constant}$$

(This formula is the base for the conversion of Celsius to Fahrenheit or the vice versa)

Therefore,

$$\frac{60 - 15}{75 - 15} = \frac{x - 25}{125 - 25}$$

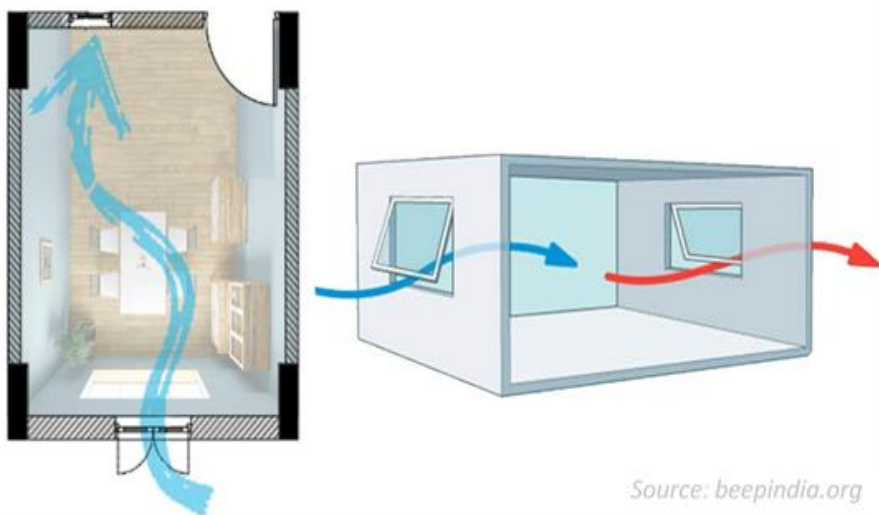
Solving the equation we get, $x = 100^\circ$

Suggested Reading: Problems related to temperature and their conversions
" For a swift review of the subject, kindly consult the study materials available on the website "

This document is a intellectual property of CAAD – Chennai Academy of Architecture and Design. This daily lessons are compiled by expert team of academicians as preparation guidebook for B.Arch., Aptitude examination to aspirants for studying architecture and practicing the same as profession in the future. The material shall not be retained and disseminated to others for commercial purpose. Image copyrights as relevant

VISUAL REASONING	LOGICAL DERIVATION	NUMERICAL ABILITY
GENERAL KNOWLEDGE, ARCHITECTURE & DESIGN		
DESIGN THINKING	LANGUAGE INTERPRETATION	DESIGN SENSITIVITY

_____ means movement of air within the building and between the building and the outdoors



A. Habitation	B. Transmission
C. Sanitation	D. Ventilation
<p>Answer key:</p> <p>D. Ventilation</p>	<p>Theory:</p> <p><i>Ventilation is the process by which 'clean' air (normally outdoor air) is intentionally provided to a space and stale air is removed. This is the flow of air into a space through openings in the building such as doors and windows.</i></p>

Suggested Reading: Basics of building construction/Components
" For a swift review of the subject, kindly consult the study materials available on the website"

This document is a intellectual property of CAAD – Chennai Academy of Architecture and Design. This daily lessons are compiled by expert team of academicians as preparation guidebook for B.Arch., Aptitude examination to aspirants for studying architecture and practicing the same as profession in the future. The material shall not be retained and disseminated to others for commercial purpose. Image copyrights as relevant

VISUAL REASONING	LOGICAL DERIVATION	NUMERICAL ABILITY
GENERAL KNOWLEDGE, ARCHITECTURE & DESIGN		
DESIGN THINKING	LANGUAGE INTERPRETATION	DESIGN SENSITIVITY

Which ancient wonder was built as a mausoleum for a Roman emperor?



Source: Definition, History & Facts | Britannica

A. Colosseum

C. Pantheon

B. Hadrian's Wall

D. Pompeii

Answer key:

Theory:

•Explanation: Pantheon: Emperor Hadrian commissioned the Pantheon's construction to honor Roman gods and serve as his final resting place. Though later converted into a church, the building's original purpose makes it a unique ancient wonder functioning as a mausoleum.

B) pantheon

Suggested Reading: History Of Architecture

" For a swift review of the subject, kindly consult the study materials available on the website"

This document is a intellectual property of CAAD – Chennai Academy of Architecture and Design. This daily lessons are compiled by expert team of academicians as preparation guidebook for B.Arch., Aptitude examination to aspirants for studying architecture and practicing the same as profession in the future. The material shall not be retained and disseminated to others for commercial purpose. Image copyrights as relevant

VISUAL REASONING	LOGICAL DERIVATION	NUMERICAL ABILITY
	GENERAL KNOWLEDGE, ARCHITECTURE & DESIGN	
DESIGN THINKING	LANGUAGE INTERPRETATION	DESIGN SENSITIVITY

What is the main focus of the ideation stage in design thinking?

- A. To finalize design decisions
- B. To empathize with end-users
- C. To generate a wide range of potential solutions
- D. To conduct user Interviews

Answer key:

C. To generate a wide range of potential solutions

Theory:

"The ideation stage in design thinking focuses on generating a wide range of potential solutions to a problem through brainstorming and exploration.

Suggested Reading: Design Thinking

"For a swift review of the subject, kindly consult the study materials available on the website"

This document is a intellectual property of CAAD – Chennai Academy of Architecture and Design. This daily lessons are compiled by expert team of academicians as preparation guidebook for B.Arch., Aptitude examination to aspirants for studying architecture and practicing the same as profession in the future. The material shall not be retained and disseminated to others for commercial purpose. Image copyrights as relevant

VISUAL REASONING	LOGICAL DERIVATION	NUMERICAL ABILITY
	GENERAL KNOWLEDGE, ARCHITECTURE & DESIGN	
DESIGN THINKING	LANGUAGE INTERPRETATION	DESIGN SENSITIVITY

Complete the following sentence by using parts which are labelled PQRS.

It is always better _____

P. and

Q. in a well-ventilated space

R. to keep the refrigerator

S. not in a closed cavity.

A. RQPS

C. RPSQ

B. PQRS

D. SQRP

Answer key:

Theory:

The proper sequence is RQPS. Let us see why.

The sentence starts with 'It is always better', which is the subject. The next logical question which follows is: 'What is better?'. The phrase/clause which follows needs to answer this question.

The phrase (R) i.e. 'to keep the refrigerator' answers this question. Hence, it has to immediately follow the initial clause. Hence, the first part of the sentence is: 'It is always better to keep the refrigerator'.

Now, the next part which follows has to describe how/where the refrigerator has to be kept in such a way that it is better. The prepositional phrase 'in a well-ventilated space' answers the question about where the refrigerator has to be placed. Hence, (Q) follows (R). The two other parts left are (P) and (S). We know that a sentence cannot end with 'and'. Hence the next part is (P) i.e. 'and'. The final part is (S) i.e. 'not in a closed cavity'.

So, the correct sentence is: 'It is always better (R) to keep the refrigerator' (Q) in a well-ventilated space (P) and (S) not in a closed cavity.

A. RQPS

Suggested Reading: Sequencing of words and phrases in a sentence

"For a swift review of the subject, kindly consult the study materials available on the website"

This document is a intellectual property of CAAD – Chennai Academy of Architecture and Design. This daily lessons are compiled by expert team of academicians as preparation guidebook for B.Arch., Aptitude examination to aspirants for studying architecture and practicing the same as profession in the future.

The material shall not be retained and disseminated to others for commercial purpose. Image copyrights as relevant

VISUAL REASONING	LOGICAL DERIVATION	NUMERICAL ABILITY
	GENERAL KNOWLEDGE, ARCHITECTURE & DESIGN	
DESIGN THINKING	LANGUAGE INTERPRETATION	DESIGN SENSITIVITY

In the question given below, a sentence with four words printed in bold type is given. The parts of the sentence are numbered as (a) (b) (c) and (d). One of these letters printed in bold may be wrongly spelt or inappropriate in the context of the sentence. Find out the word and the number of the part of the sentence containing the word is your answer. If you do not find any mistakes, mark option (e).

- A. By **created** the most precise
- B. lunar gravity map, scientists
- C. **hope** to find out
- D. what is **beneath** the lunar surface
- E. All correct

A. Created

C. Showed

B. Repeated

D. Proved

E. All Correct

Answer key:

Theory:

Replace 'create' with 'creating'. Hence, option A is correct.

A : Created

Suggested Reading: Grammar correction

" For a swift review of the subject, kindly consult the study materials available on the website"

This document is a intellectual property of CAAD – Chennai Academy of Architecture and Design. This daily lessons are compiled by expert team of academicians as preparation guidebook for B.Arch., Aptitude examination to aspirants for studying architecture and practicing the same as profession in the future. The material shall not be retained and disseminated to others for commercial purpose. Image copyrights as relevant

VISUAL REASONING	LOGICAL DERIVATION	NUMERICAL ABILITY
	GENERAL KNOWLEDGE, ARCHITECTURE & DESIGN	
DESIGN THINKING	LANGUAGE INTERPRETATION	DESIGN SENSITIVITY

What are the colours used in the Olympic Logo?



A. Green, Red, Orange, Yellow, Blue

C. Brown, Green, Red, Blue, Yellow

B. White, Red, Blue, Green, Black

D. Blue, Yellow, Black, Green, Red

Answer key:

Theory:

Five Rings: The symbol of Olympics i.e. 5 rings represent five continents - Europe, Africa, Asia, Americas and Oceania.

Blue color is for Europe

Yellow color is for Asia

Black color is for Africa

Green color is for Oceania

Red color is for Americas



D. Blue, Yellow, Black, Green, Red

Suggested Reading: Logo Design

"For a swift review of the subject, kindly consult the study materials available on the website"

This document is a intellectual property of CAAD – Chennai Academy of Architecture and Design. This daily lessons are compiled by expert team of academicians as preparation guidebook for B.Arch., Aptitude examination to aspirants for studying architecture and practicing the same as profession in the future.

The material shall not be retained and disseminated to others for commercial purpose. Image copyrights as relevant