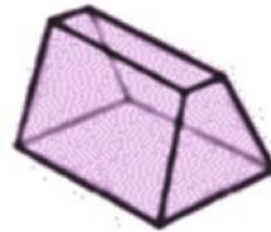


▪ DIAGRAMMATIC REASONING / LOGICAL REASONING

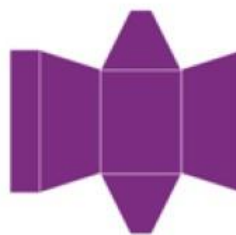
- NUMERICAL REASONING
- VERBAL REASONING / SITUATIONAL JUDGEMENT
- INDUCTIVE REASONING
- ABSTRACT REASONING
- ART MOVEMENT AND HISTORY
- VISUAL PERCEPTION
- BUILDING MATERIALS AND CONSTRUCTION

01. A chocolate box is made as shown in the image. If the box is opened out as a flat sheet, which one of the following layout is the resultant net?

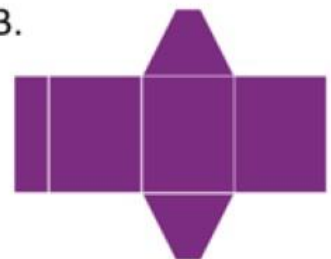


Source: CAAD-DRL

A.



B.



C.

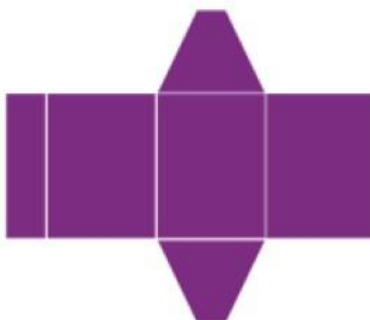


D.



Answer key

B.



Theory

**SOLIDS IN TWO & THREE DIMENSIONS**

These questions use irregular solid shapes as a layout and the question is to identify the three dimensional form arrived at by folding. This question can be asked in reverse also with the opened out figure as the question and the resulting solid for the options.

**Key strategy - Use the process of elimination. Consider the connection between four visible faces.**

This document is a intellectual property of CAAD – Chennai Academy of Architecture and Design. This daily lessons are compiled by expert team of academicians as preparation guidebook for B.Arch., Aptitude examination to aspirants for studying architecture and practicing the same as profession in the future. The material shall not be retained and disseminated to others for commercial purpose. Image copyrights as relevant

**DAILY PCQ/MCQ/MSQ/NAQ LESSONS**

**B.Arch.,**

For Admissions Contact 9710 55 4545  
www.caad.ac.in 9710 93 0025

caad

CHENNAI  
ACADEMY OF  
ARCHITECTURE AND  
DESIGN

A STANDALONE ARCHITECTURE COLLEGE IN CHENNAI OF INTERNATIONAL STANDARDS

▪ DIAGRAMMATIC REASONING / LOGICAL REASONING

▪ **NUMERICAL REASONING**

▪ VERBAL REASONING / SITUATIONAL JUDGEMENT

▪ INDUCTIVE REASONING

▪ ABSTRACT REASONING

▪ ART MOVEMENT AND HISTORY

▪ VISUAL PERCEPTION

▪ BUILDING MATERIALS AND CONSTRUCTION

02. The floor dimensions of a rectangular room when increased by 4 meters are in the ratio of 4:3 and when decreased by 4 meters, are in the ratio of 2:1. The dimensions of the room are .....

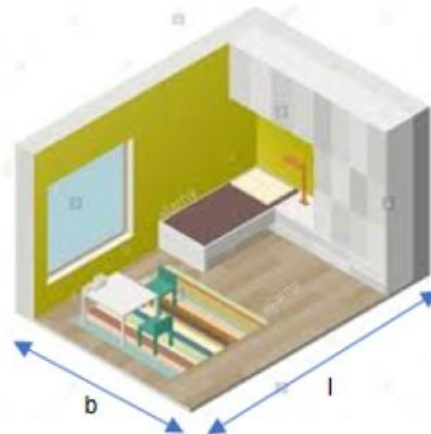
A. 6M and 4M

B. 12M and 8M

C. 8M and 16M

D. 24M and 16M

Theory



Let the length and breadth of the rectangular room be  $l$  and  $b$ .

We have,  $(l+4)/(b+4) = 4/3$

$$\Rightarrow 3l + 12 = 4b + 16$$

$$\Rightarrow 3l - 4b = 4 \dots\dots\dots (1)$$

Again, we have  $(l-4)/(b-4) = 2/1$

$$\Rightarrow l - 4 = 2b - 8$$

$$\Rightarrow l - 2b = -4 \dots\dots\dots (2)$$

Solving (1) and (2), we get  $l = 12$  and  $b = 8$

Answer key

**B. 12M and 8M**

This document is a intellectual property of CAAD – Chennai Academy of Architecture and Design. This daily lessons are compiled by expert team of academicians as preparation guidebook for B.Arch., Aptitude examination to aspirants for studying architecture and practicing the same as profession in the future. The material shall not be retained and disseminated to others for commercial purpose. Image copyrights as relevant

**DAILY PCQ/MCQ/MSQ/NAQ LESSONS**

**B.Arch.,**

For Admissions Contact 9710 55 4545  
www.caad.ac.in 9710 93 0025

**caad**

**CHENNAI  
ACADEMY OF  
ARCHITECTURE AND  
DESIGN**

**A STANDALONE ARCHITECTURE COLLEGE IN CHENNAI OF INTERNATIONAL STANDARDS**



▪ DIAGRAMMATIC REASONING / LOGICAL REASONING

▪ NUMERICAL REASONING

▪ **VERBAL REASONING / SITUATIONAL JUDGEMENT**

▪ INDUCTIVE REASONING

▪ ABSTRACT REASONING

▪ ART MOVEMENT AND HISTORY

▪ VISUAL PERCEPTION

▪ BUILDING MATERIALS AND CONSTRUCTION

**03. Read the passage below and answer the questions that follow:**

Care should be taken when submitting manuscripts to book publishers. A suitable publisher should be chosen, by a study of his list of publications or an examination in the bookshops of the type of books in which he specializes. It is a waste of time and money to send the typescript of a novel to a publisher who publishes no fiction, or poetry to one who publishes no verse, though all too often this is done. A preliminary letter is appreciated by most publishers, and this should outline the nature and extent of the typescript and enquire whether the publisher would be prepared to read it (writers have been known to send out such letters of enquiry in duplicated form, an approach not calculated to stimulate a publisher's interest). It is desirable to enclose the cost of return postage when submitting the typescript and finally it must be understood that although every reasonable care is taken of material in the Publishers' possession, responsibility cannot be accepted for any loss or damage thereto.

Authors are strongly advised not to pay for the publication of their work. If a MS. is worth publishing, a reputable publisher will undertake its publication at his own expense, except possibly for works of an academic nature. In this connection we may have to consider Self-publishing and vanity publishing.

**In view of the writer –**

- The publisher will stick to his line of publication only.
- The publisher who does not publish the other books, may not understand the ingredients and pattern of publication.
- Publisher will not devote time to the Editing and reading the material which is not of its line of publication.
- Any publisher, not publishing the content of other type will not be able to do justice with the manuscript.

**Answer key:**

**D. Any publisher, not publishing the content of other type will not be able to do justice with the manuscript.**

*This document is a intellectual property of CAAD – Chennai Academy of Architecture and Design. This daily lessons are compiled by expert team of academicians as preparation guidebook for B.Arch., Aptitude examination to aspirants for studying architecture and practicing the same as profession in the future. The material shall not be retained and disseminated to others for commercial purpose. Image copyrights as relevant*

**DAILY PCQ/MCQ/MSQ/NAQ LESSONS**

**B.Arch.,**

For Admissions Contact 9710 55 4545  
www.caad.ac.in 9710 93 0025

caad

CHENNAI  
ACADEMY OF  
ARCHITECTURE AND  
DESIGN

**A STANDALONE ARCHITECTURE COLLEGE IN CHENNAI OF INTERNATIONAL STANDARDS**



▪ DIAGRAMMATIC REASONING / LOGICAL REASONING

▪ NUMERICAL REASONING

▪ VERBAL REASONING / SITUATIONAL JUDGEMENT

▪ **INDUCTIVE REASONING**

▪ ABSTRACT REASONING

▪ ART MOVEMENT AND HISTORY

▪ VISUAL PERCEPTION

▪ BUILDING MATERIALS AND CONSTRUCTION

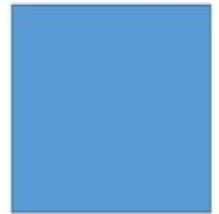
04. Choose the odd one out



A



B



C



D



E

Source: CAAD - DRL

Answer key

E.



Theory

The flat side of all the shapes is shown at the bottom part of the figures except in option E, where its flat side is shown at the top.

This document is a intellectual property of CAAD – Chennai Academy of Architecture and Design. This daily lessons are compiled by expert team of academicians as preparation guidebook for B.Arch., Aptitude examination to aspirants for studying architecture and practicing the same as profession in the future. The material shall not be retained and disseminated to others for commercial purpose. Image copyrights as relevant

**DAILY PCQ/MCQ/MSQ/NAQ LESSONS**

**B.Arch.,**

For Admissions Contact 9710 55 4545  
www.caad.ac.in 9710 93 0025

caad

CHENNAI  
ACADEMY OF  
ARCHITECTURE AND  
DESIGN

A STANDALONE ARCHITECTURE COLLEGE IN CHENNAI OF INTERNATIONAL STANDARDS

▪ DIAGRAMMATIC REASONING / LOGICAL REASONING

▪ NUMERICAL REASONING

▪ VERBAL REASONING / SITUATIONAL JUDGEMENT

▪ INDUCTIVE REASONING

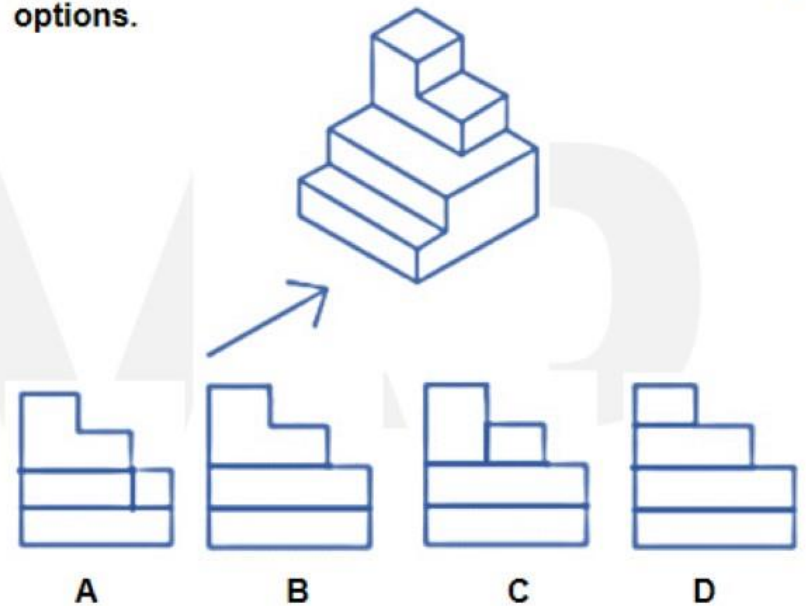
▪ **ABSTRACT REASONING**

▪ ART MOVEMENT AND HISTORY

▪ VISUAL PERCEPTION

▪ BUILDING MATERIALS AND CONSTRUCTION

05. The figure shows an isometric view of an object. Identify the correct front view when looking in the direction of the arrow from the following options.



A. Option A

B. Option B

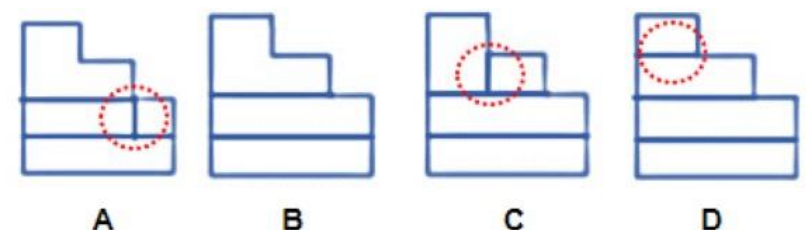
C. Option C

D. Option D

Answer key



Theory



The lines inside the red circles are the lines which are not possible in the front view. So Option B is correct

This document is a intellectual property of CAAD – Chennai Academy of Architecture and Design. This daily lessons are compiled by expert team of academicians as preparation guidebook for B.Arch., Aptitude examination to aspirants for studying architecture and practicing the same as profession in the future. The material shall not be retained and disseminated to others for commercial purpose. Image copyrights as relevant

**DAILY PCQ/MCQ/MSQ/NAQ LESSONS**

**B.Arch.,**

For Admissions Contact 9710 55 4545  
www.caad.ac.in 9710 93 0025

caad

CHENNAI  
ACADEMY OF  
ARCHITECTURE AND  
DESIGN

A STANDALONE ARCHITECTURE COLLEGE IN CHENNAI OF INTERNATIONAL STANDARDS



- DIAGRAMMATIC REASONING / LOGICAL REASONING
- NUMERICAL REASONING
- VERBAL REASONING / SITUATIONAL JUDGEMENT
- INDUCTIVE REASONING
- ABSTRACT REASONING
- ART MOVEMENT AND HISTORY
- VISUAL PERCEPTION
- BUILDING MATERIALS AND CONSTRUCTION

06. Which civilization does this art form belong to?



A. Roman

B. Gothic

C. Egyptian

D. Mesopotamian

Answer key

C. Egyptian

Theory

*Egyptian art is known for its distinctive figure convention used for the main figures in both relief and painting, with parted legs (when not seated) and head shown as seen from the side, but the torso seen as from the front. The figures also have a standard set of proportions, measuring 18 "fists" from the ground to the hair-line on the forehead.*

This document is a intellectual property of CAAD – Chennai Academy of Architecture and Design. This daily lessons are compiled by expert team of academicians as preparation guidebook for B.Arch., Aptitude examination to aspirants for studying architecture and practicing the same as profession in the future. The material shall not be retained and disseminated to others for commercial purpose. Image copyrights as relevant

**DAILY PCQ/MCQ/MSQ/NAQ LESSONS**

**B.Arch.,**

For Admissions Contact 9710 55 4545  
www.caad.ac.in 9710 93 0025

**caad**

**CHENNAI  
ACADEMY OF  
ARCHITECTURE AND  
DESIGN**

**A STANDALONE ARCHITECTURE COLLEGE IN CHENNAI OF INTERNATIONAL STANDARDS**

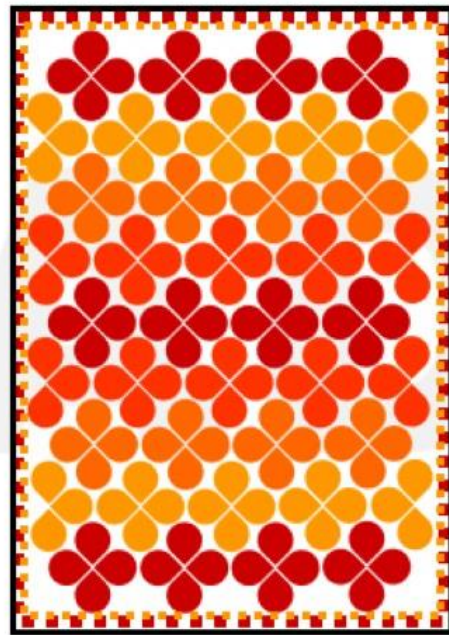


- DIAGRAMMATIC REASONING / LOGICAL REASONING
- NUMERICAL REASONING
- VERBAL REASONING / SITUATIONAL JUDGEMENT
- INDUCTIVE REASONING
- ABSTRACT REASONING
- ART MOVEMENT AND HISTORY

▪ VISUAL PERCEPTION

- BUILDING MATERIALS AND CONSTRUCTION

07. What is the type of colours used to create the pattern in the blanket?



A. Primary Colours

B. Secondary Colours

C. Cool Colours

D. Warm Colours

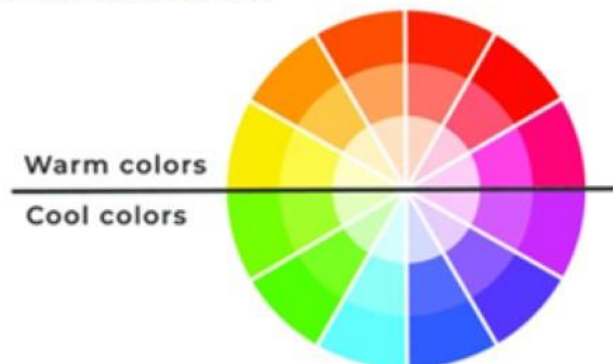
Answer key

D. Warm Colours

**Theory:**

**Warm Colours**

Warm colors consist of orange, red, yellow, and combinations of these and similar colors.



This document is a intellectual property of CAAD – Chennai Academy of Architecture and Design. This daily lessons are compiled by expert team of academicians as preparation guidebook for B.Arch., Aptitude examination to aspirants for studying architecture and practicing the same as profession in the future. The material shall not be retained and disseminated to others for commercial purpose. Image copyrights as relevant

**DAILY PCQ/MCQ/MSQ/NAQ LESSONS**

**B.Arch.,**

For Admissions Contact 9710 55 4545  
www.caad.ac.in 9710 93 0025

**caad**

CHENNAI  
ACADEMY OF  
ARCHITECTURE AND  
DESIGN

A STANDALONE ARCHITECTURE COLLEGE IN CHENNAI OF INTERNATIONAL STANDARDS

- DIAGRAMMATIC REASONING / LOGICAL REASONING
- NUMERICAL REASONING
- VERBAL REASONING / SITUATIONAL JUDGEMENT
- INDUCTIVE REASONING
- ABSTRACT REASONING
- ART MOVEMENT AND HISTORY
- VISUAL PERCEPTION
- **BUILDING MATERIALS AND CONSTRUCTION**

08. The term \_\_\_\_\_ is defined as the construction of individual building units bonded together with mortar.



Source: istockphoto.com

A. Masonry

B. Coping

C. Brick

D. Roof

#### Answer key

A. Masonry

#### Theory

*The term Masonry is used to indicate the art of building the structures in either stone, bricks or concrete blocks. Masonry is normally used for the construction of foundations, walls, columns and other similar structural components of buildings. Masonry is generally a highly durable form of construction.*

This document is a intellectual property of CAAD – Chennai Academy of Architecture and Design. This daily lessons are compiled by expert team of academicians as preparation guidebook for B.Arch., Aptitude examination to aspirants for studying architecture and practicing the same as profession in the future. The material shall not be retained and disseminated to others for commercial purpose. Image copyrights as relevant

**DAILY PCQ/MCQ/MSQ/NAQ LESSONS**

**B.Arch.,**

For Admissions Contact 9710 55 4545  
www.caad.ac.in 9710 93 0025

**caad**

CHENNAI  
ACADEMY OF  
ARCHITECTURE AND  
DESIGN

A STANDALONE ARCHITECTURE COLLEGE IN CHENNAI OF INTERNATIONAL STANDARDS



# NATA 2021 CAAD BITESIZE

caad 

01.07.2021 PCQ/MCQ/MSQ/NAQ

Prepared by  
**EXPERTS IN  
ARCHITECTURE  
EDUCATION**

**ANNA  
UNIVERSITY  
COUNSELLING  
CODE**

**1152**



**BITESIZE  
13**

**B.Arch.,** 9710 55 4545 / 9710 93 0025

caad 

CHENNAI  
ACADEMY OF  
ARCHITECTURE AND  
DESIGN